

KEYSVILLE, VIRGINIA

912

Demographics

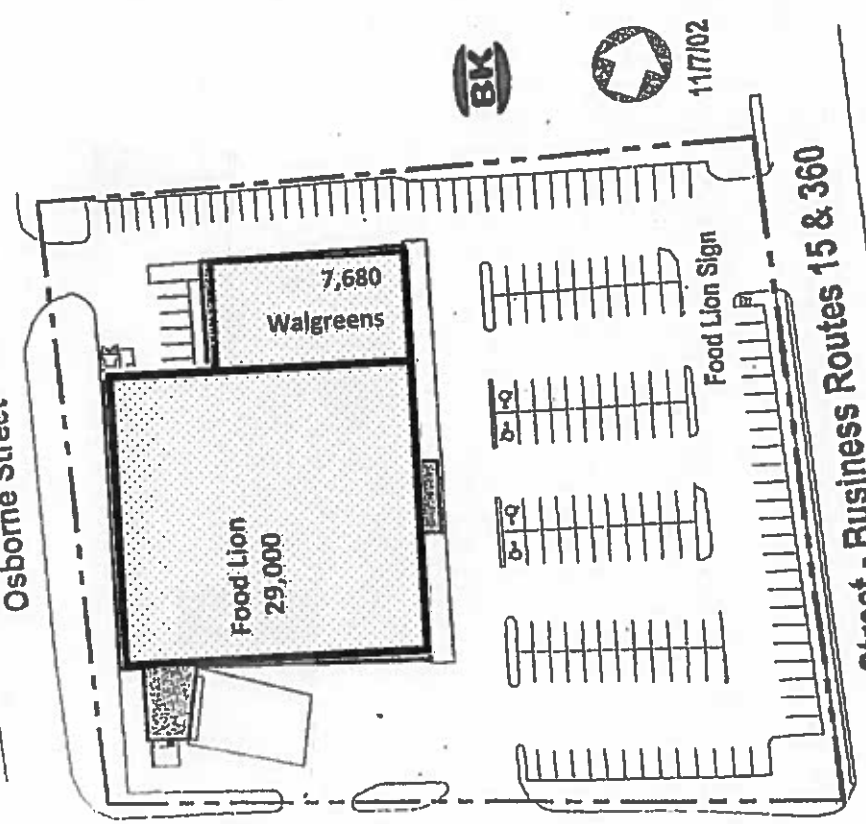
	1 Mile	3 Mile	5 Mile
2001 Estimates	235	1,329	2,079
Total Population:	102	562	1,163
Total Households:	\$33,501	\$33,108	\$32,430
Avg. HH Income:	\$29,104	\$28,087	\$27,057
Med. HH Income:			

Updates of 2000 Census Data by Claritas

Site Data

Gross Leasable Area: 40,227-sf
 Acreage: 3.7 Acres
 Parking: Total Spaces: 172
 Ratio Per 1000sf: 4.28

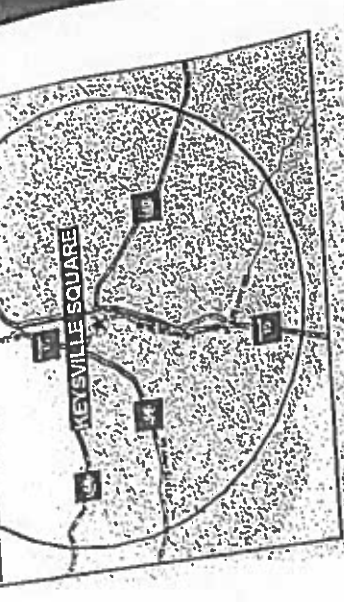
Osborne Street



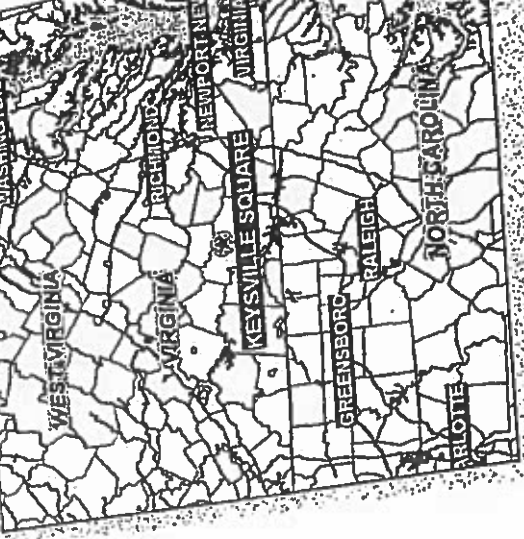
King Street - Business Routes 15 & 360

Competition Map

2001 Average Income by Area Group
 \$20,000 or less
 \$20,000 to \$25,000
 \$25,000 to \$35,000
 \$35,000 to \$50,000
 More than \$50,000



Regional Map



KEYSVILLE SQUARE