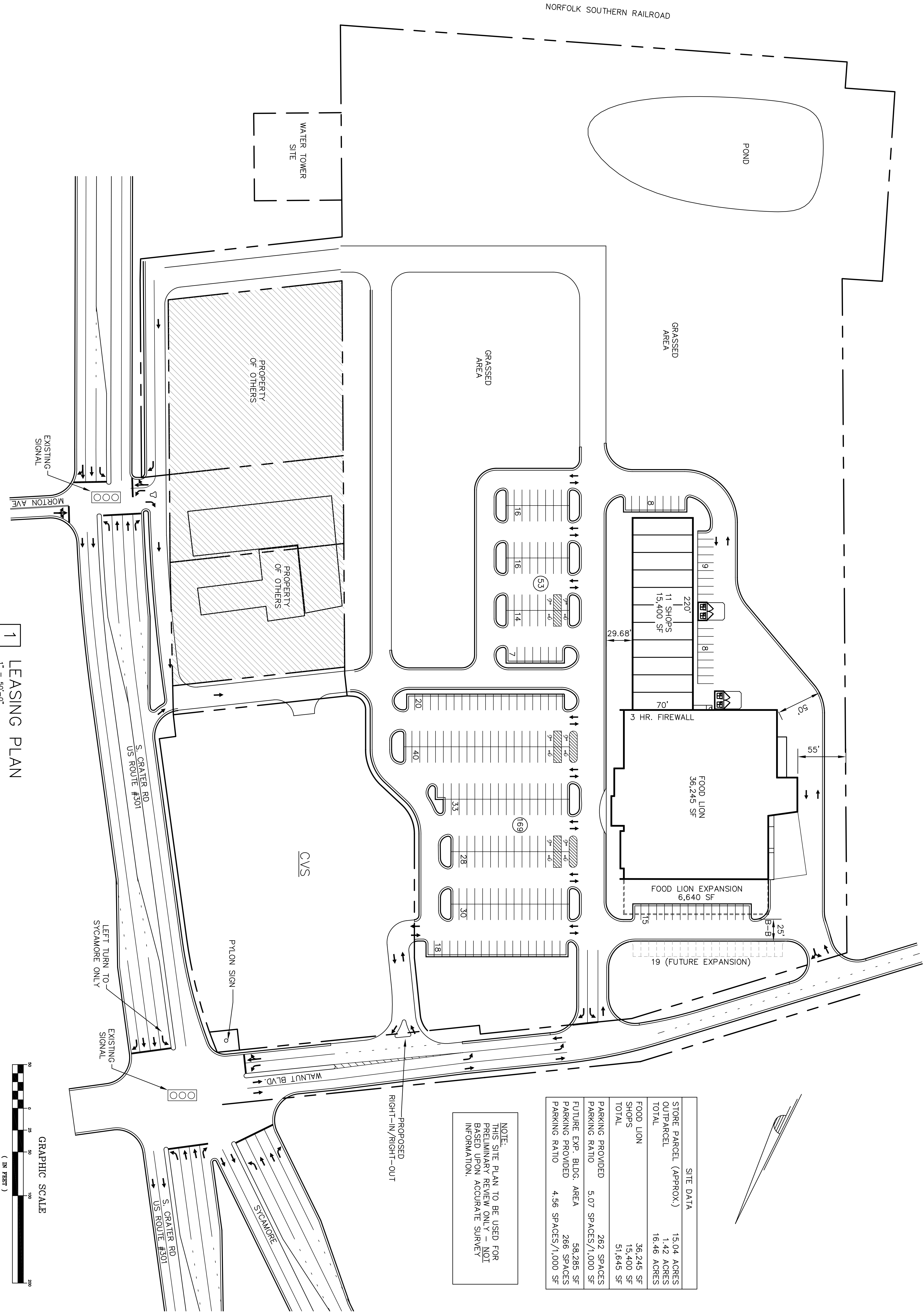


NORFOLK SOUTHERN RAILROAD



SITE DATA	
STORE PARCEL (APPROX.)	15.04 ACRES
OUTPARCEL	1.42 ACRES
TOTAL	16.46 ACRES
FOOD LION	36,245 SF
SHOPS	15,400 SF
TOTAL	51,645 SF
PARKING PROVIDED	262 SPACES
PARKING RATIO	5.07 SPACES/1,000 SF
FUTURE EXP. BLDG. AREA	58,285 SF
PARKING PROVIDED	266 SPACES
PARKING RATIO	4.56 SPACES/1,000 SF

NOTE:
 THIS SITE PLAN TO BE USED FOR
 PRELIMINARY REVIEW ONLY - NOT
 INFORMATION.
 BASED UPON ACCURATE SURVEY

WALNUT HILL MARKET SHOPPING CENTER

State Route 301 (S. Crater Rd.) & Walnut Blvd.
 Petersburg, Virginia
 Barnett Properties, LLC

issue date:
 19 JUNE 2008 - LEASING
 PLAN UPDATED

THIS DRAWING AND THE DESIGN
 THEREOF ARE THE PROPERTY OF
 QUICK-ASSOCIATES, P.A. ANY
 REPRODUCTION, COPYING OR
 OTHER USE OF THIS DRAWING
 WITHOUT THEIR WRITTEN AND
 EXCLUSIVE CONSENT IS PROHIBITED AND
 SUBJECT TO LEGAL ACTION.
 © COPYRIGHT 2008
 QUICK-ASSOCIATES, P.A.

project 10609.00
 dwg. by GS
 ckd. by DCE
 content
 LEASING PLAN

NOT FOR CONSTRUCTION
 sheet
 LP.1
 1 of 1

1 LEASING PLAN
 1" = 50'-0"

