

N.C. Hwy. 581 - 60' R/W

U.S. Hwy 64 Business/N.C. Hwy. 581 - 80' R/W

SHOPPING CENTER PARCEL  
333,184.60 sq.ft  
77820.1128

**Outparcel 1**  
49,223.11 sq.ft.  
1.1300 acres

**Outparcel 2**  
49,018.20 sq.ft.  
1.1253 acres

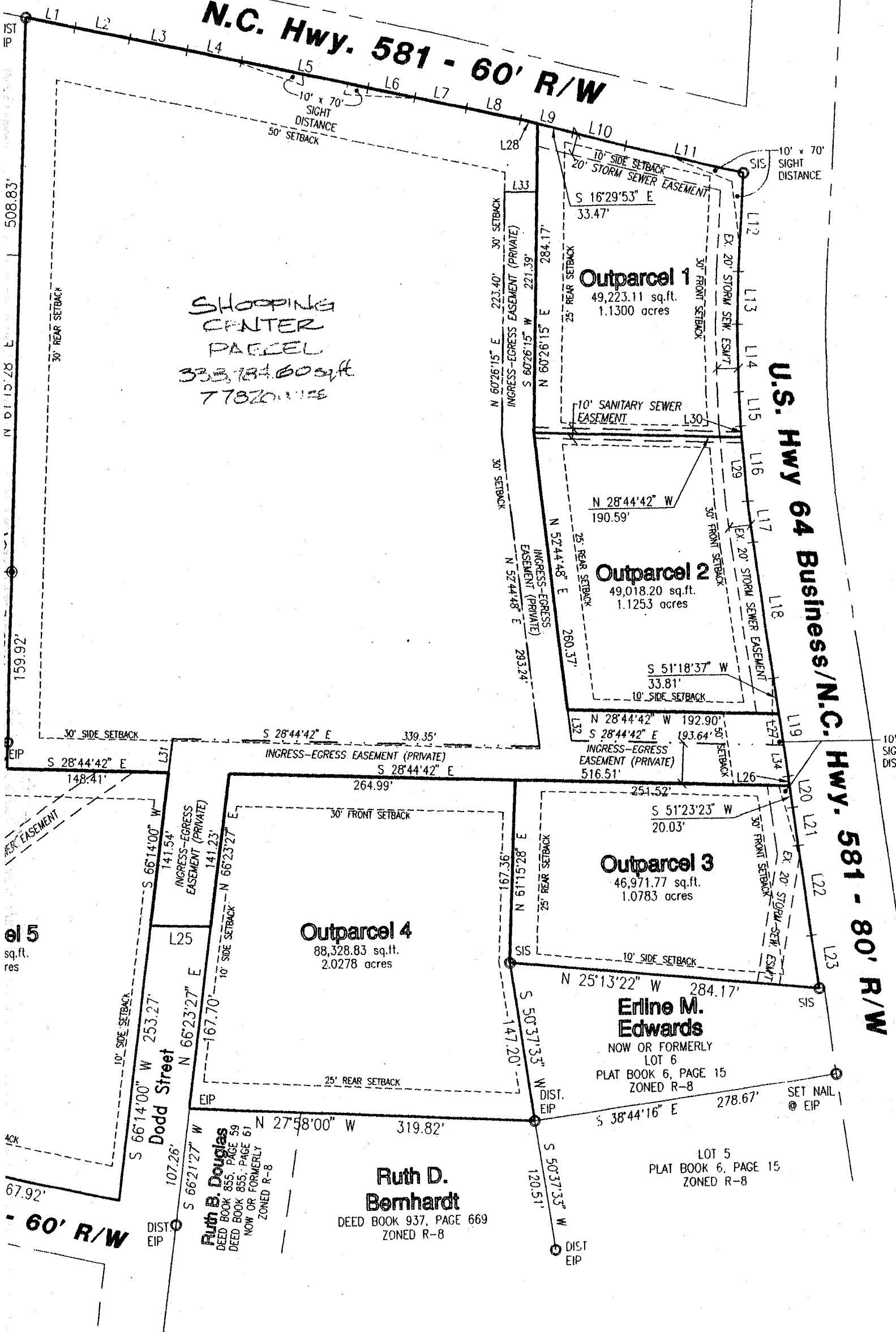
**Outparcel 3**  
46,971.77 sq.ft.  
1.0783 acres

**Outparcel 4**  
88,328.83 sq.ft.  
2.0278 acres

**Erline M. Edwards**  
NOW OR FORMERLY  
LOT 6  
PLAT BOOK 6, PAGE 15  
ZONED R-8

**Ruth D. Bernhardt**  
DEED BOOK 937, PAGE 669  
ZONED R-8

**Ruth B. Douglas**  
DEED BOOK 855, PAGE 59  
DEED BOOK 855, PAGE 61  
NOW OR FORMERLY  
ZONED R-8



615 sq.ft. res

- 60' R/W

PLAT BOOK 6, PAGE 15  
ZONED R-8  
NOTARY PUBLIC  
This instrument was presented for registration and recorded in this

