



Demographic and Income Profile

Salem Street Station
900 W Cooksey Dr
Thomasville, NC 27360-3374

Site Type: Rings

Latitude: 35.89915
Longitude: -80.09257
Radius: 1 Miles

Summary	2000	2009	2014
Population	3,589	3,617	3,623
Households	1,429	1,451	1,457
Families	931	908	900
Average Household Size	2.50	2.48	2.47
Owner Occupied HUs	613	616	615
Renter Occupied HUs	816	835	842
Median Age	34.0	35.5	35.9

Trends: 2009-2014 Annual Rate	Area	State	National
Population	0.03%	1.58%	0.91%
Households	0.08%	1.68%	0.94%
Families	-0.18%	1.45%	0.74%
Owner HHs	-0.03%	1.70%	1.19%
Median Household Income	1.15%	0.85%	0.80%

Households by Income	2000		2009		2014	
	Number	Percent	Number	Percent	Number	Percent
< \$15,000	374	26.7%	298	20.5%	289	19.8%
\$15,000 - \$24,999	280	20.0%	240	16.5%	235	16.1%
\$25,000 - \$34,999	236	16.8%	198	13.6%	181	12.4%
\$35,000 - \$49,999	155	11.1%	260	17.9%	283	19.4%
\$50,000 - \$74,999	210	15.0%	229	15.8%	252	17.3%
\$75,000 - \$99,999	75	5.4%	114	7.9%	101	6.9%
\$100,000 - \$149,999	49	3.5%	74	5.1%	76	5.2%
\$150,000 - \$199,000	5	0.4%	22	1.5%	23	1.6%
\$200,000+	17	1.2%	16	1.1%	17	1.2%
Median Household Income	\$26,989		\$34,291		\$36,309	
Average Household Income	\$41,300		\$46,704		\$48,018	
Per Capita Income	\$16,698		\$19,723		\$20,345	

Population by Age	2000		2009		2014	
	Number	Percent	Number	Percent	Number	Percent
0 - 4	308	8.6%	311	8.6%	306	8.5%
5 - 9	280	7.8%	252	7.0%	251	6.9%
10 - 14	247	6.9%	242	6.7%	240	6.6%
15 - 19	226	6.3%	246	6.8%	224	6.2%
20 - 24	251	7.0%	254	7.0%	277	7.7%
25 - 34	538	15.0%	482	13.3%	477	13.2%
35 - 44	478	13.3%	445	12.3%	408	11.3%
45 - 54	422	11.8%	458	12.7%	428	11.8%
55 - 64	338	9.4%	427	11.8%	471	13.0%
65 - 74	245	6.8%	239	6.6%	285	7.9%
75 - 84	185	5.2%	170	4.7%	155	4.3%
85+	72	2.0%	94	2.6%	98	2.7%

Race and Ethnicity	2000		2009		2014	
	Number	Percent	Number	Percent	Number	Percent
White Alone	1,711	47.7%	1,571	43.4%	1,491	41.2%
Black Alone	1,666	46.4%	1,732	47.9%	1,746	48.2%
American Indian Alone	10	0.3%	11	0.3%	11	0.3%
Asian Alone	21	0.6%	29	0.8%	33	0.9%
Pacific Islander Alone	0	0.0%	0	0.0%	0	0.0%
Some Other Race Alone	122	3.4%	201	5.6%	259	7.2%
Two or More Races	59	1.6%	73	2.0%	81	2.2%
Hispanic Origin (Any Race)	201	5.6%	307	8.5%	382	10.5%

Data Note: Income is expressed in current dollars.

Source: U.S. Bureau of the Census, 2000 Census of Population and Housing. ESRI forecasts for 2009 and 2014.



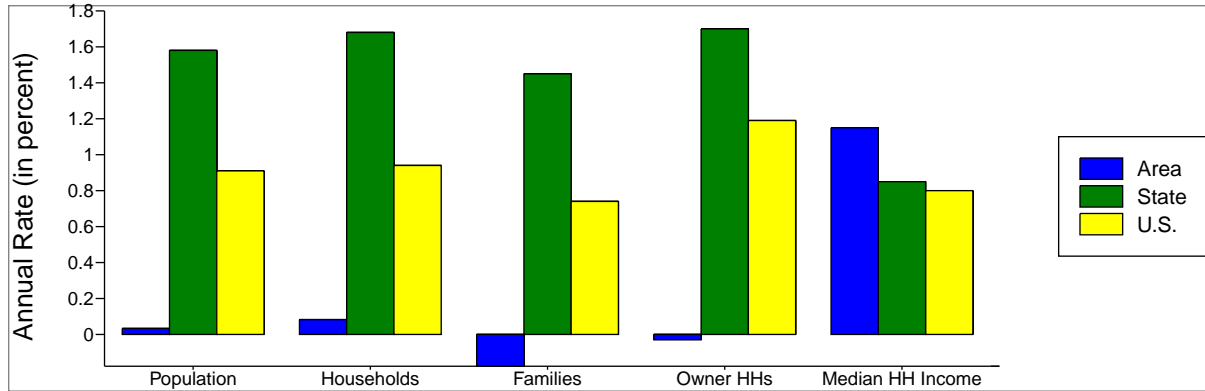
Demographic and Income Profile

Salem Street Station
 900 W Cooksey Dr
 Thomasville, NC 27360-3374

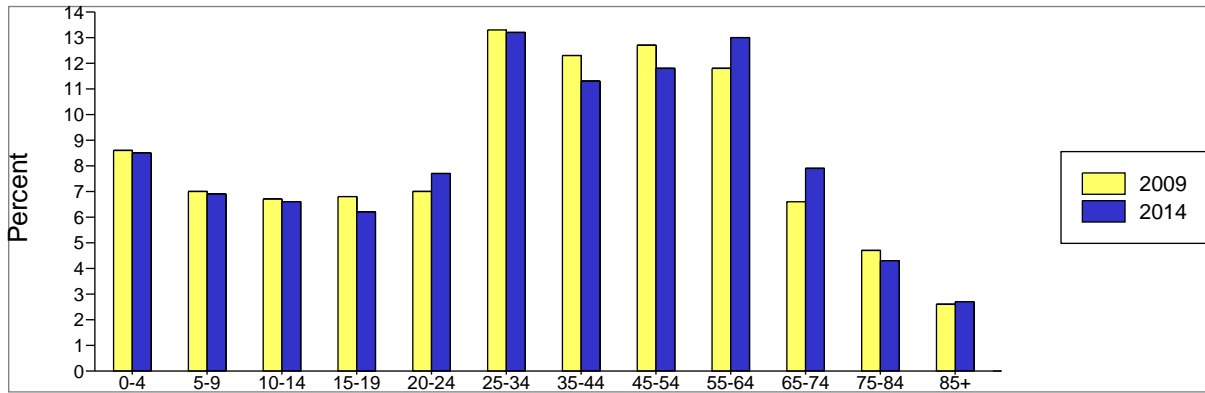
Latitude: 35.89915
 Longitude: -80.09257
 Radius: 1 Miles

Site Type: Rings

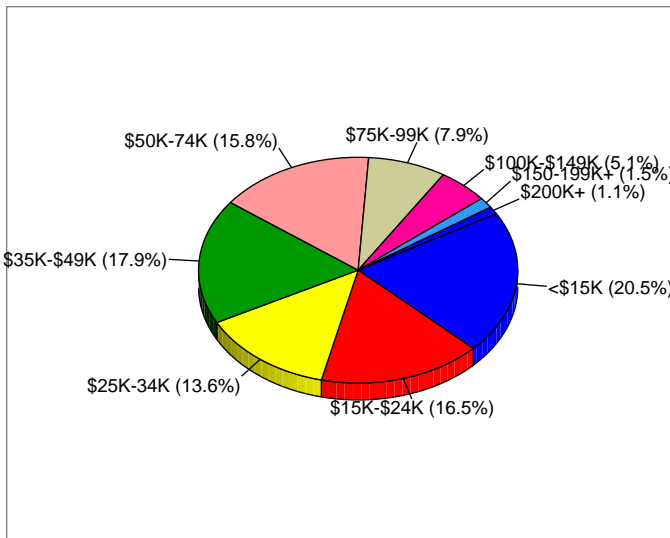
Trends 2009-2014



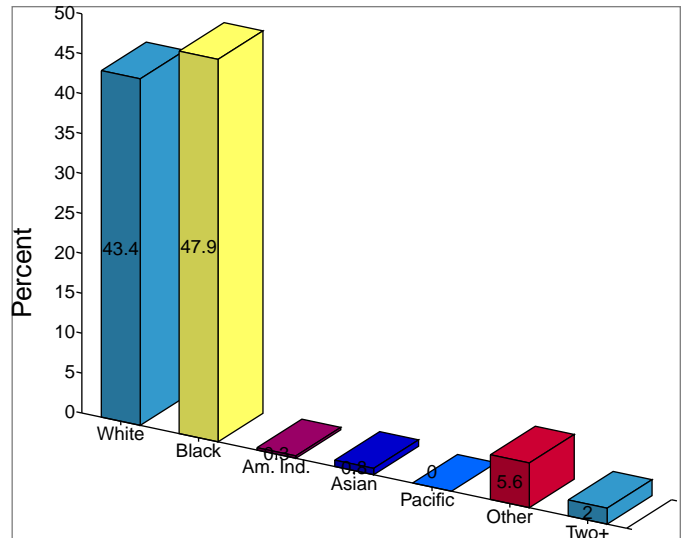
Population by Age



2009 Household Income



2009 Population by Race



2009 Percent Hispanic Origin: 8.5%



Demographic and Income Profile

Salem Street Station
900 W Cooksey Dr
Thomasville, NC 27360-3374

Site Type: Rings

Latitude: 35.89915
Longitude: -80.09257
Radius: 3 Miles

Summary	2000	2009	2014
Population	24,959	26,582	27,277
Households	10,072	10,747	11,040
Families	6,920	7,135	7,245
Average Household Size	2.44	2.44	2.43
Owner Occupied HUs	6,019	6,395	6,591
Renter Occupied HUs	4,052	4,352	4,449
Median Age	35.0	37.2	38.1

Trends: 2009-2014 Annual Rate	Area	State	National
Population	0.52%	1.58%	0.91%
Households	0.54%	1.68%	0.94%
Families	0.31%	1.45%	0.74%
Owner HHs	0.61%	1.70%	1.19%
Median Household Income	1.54%	0.85%	0.80%

Households by Income	2000		2009		2014	
	Number	Percent	Number	Percent	Number	Percent
< \$15,000	1,976	19.6%	1,641	15.3%	1,591	14.4%
\$15,000 - \$24,999	1,818	18.1%	1,450	13.5%	1,427	12.9%
\$25,000 - \$34,999	1,618	16.1%	1,300	12.1%	1,191	10.8%
\$35,000 - \$49,999	1,794	17.8%	1,969	18.3%	2,208	20.0%
\$50,000 - \$74,999	1,755	17.4%	2,610	24.3%	2,904	26.3%
\$75,000 - \$99,999	671	6.7%	956	8.9%	860	7.8%
\$100,000 - \$149,999	286	2.8%	567	5.3%	589	5.3%
\$150,000 - \$199,000	66	0.7%	142	1.3%	150	1.4%
\$200,000+	77	0.8%	113	1.1%	119	1.1%
Median Household Income	\$32,509		\$41,522		\$44,827	
Average Household Income	\$41,714		\$50,345		\$51,197	
Per Capita Income	\$16,868		\$20,443		\$20,823	

Population by Age	2000		2009		2014	
	Number	Percent	Number	Percent	Number	Percent
0 - 4	1,940	7.8%	2,018	7.6%	2,008	7.4%
5 - 9	1,816	7.3%	1,872	7.0%	1,900	7.0%
10 - 14	1,627	6.5%	1,834	6.9%	1,888	6.9%
15 - 19	1,404	5.6%	1,718	6.5%	1,756	6.4%
20 - 24	1,583	6.3%	1,521	5.7%	1,713	6.3%
25 - 34	4,129	16.5%	3,428	12.9%	3,289	12.1%
35 - 44	3,645	14.6%	3,967	14.9%	3,680	13.5%
45 - 54	3,036	12.2%	3,544	13.3%	3,658	13.4%
55 - 64	2,258	9.0%	2,973	11.2%	3,240	11.9%
65 - 74	1,804	7.2%	1,821	6.9%	2,239	8.2%
75 - 84	1,293	5.2%	1,305	4.9%	1,284	4.7%
85+	426	1.7%	581	2.2%	622	2.3%

Race and Ethnicity	2000		2009		2014	
	Number	Percent	Number	Percent	Number	Percent
White Alone	18,741	75.1%	18,975	71.4%	18,823	69.0%
Black Alone	4,807	19.3%	5,286	19.9%	5,468	20.0%
American Indian Alone	107	0.4%	122	0.5%	129	0.5%
Asian Alone	177	0.7%	277	1.0%	344	1.3%
Pacific Islander Alone	2	0.0%	2	0.0%	2	0.0%
Some Other Race Alone	820	3.3%	1,488	5.6%	1,998	7.3%
Two or More Races	305	1.2%	432	1.6%	514	1.9%
Hispanic Origin (Any Race)	1,470	5.9%	2,429	9.1%	3,121	11.4%

Data Note: Income is expressed in current dollars.

Source: U.S. Bureau of the Census, 2000 Census of Population and Housing. ESRI forecasts for 2009 and 2014.



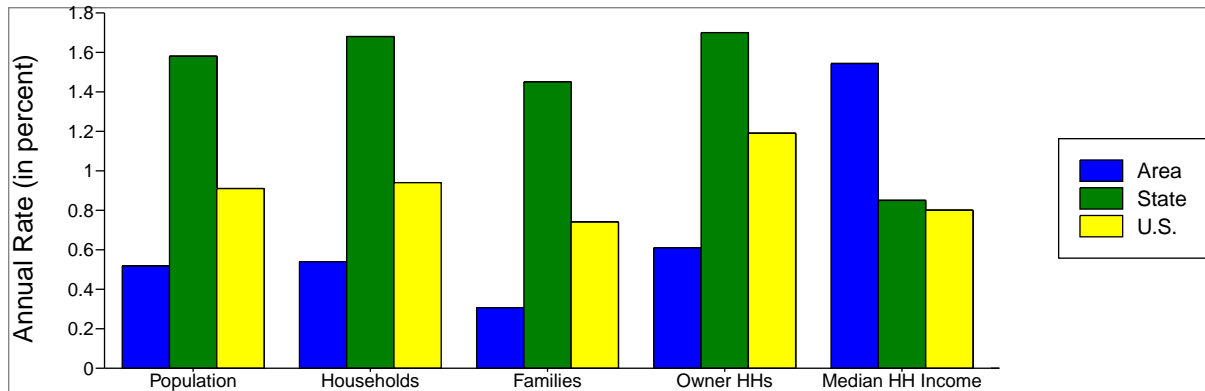
Demographic and Income Profile

Salem Street Station
 900 W Cooksey Dr
 Thomasville, NC 27360-3374

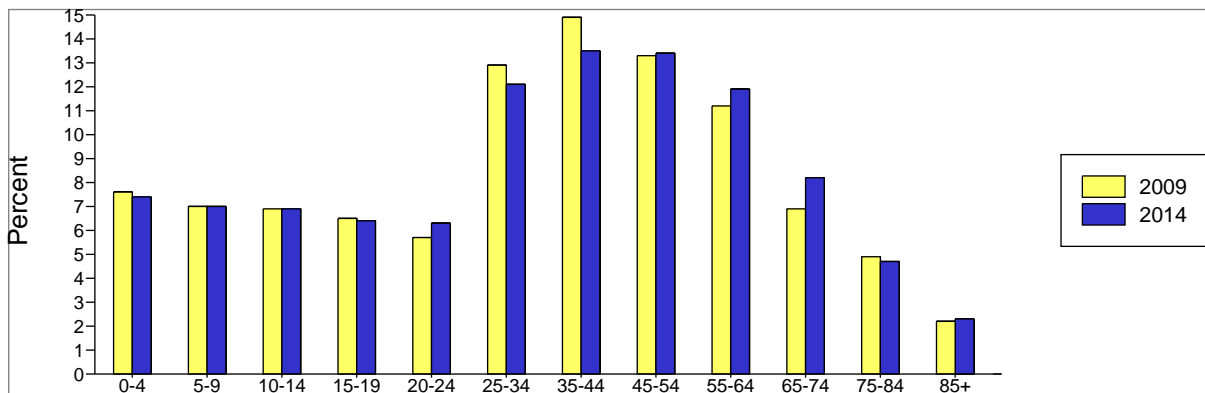
Latitude: 35.89915
 Longitude: -80.09257
 Radius: 3 Miles

Site Type: Rings

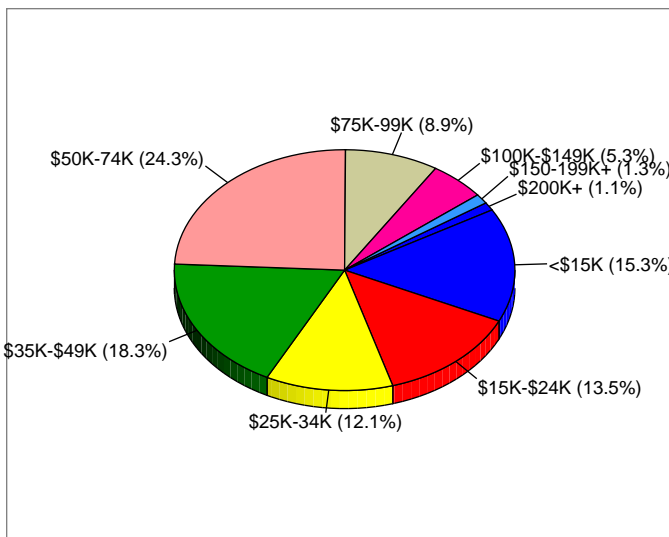
Trends 2009-2014



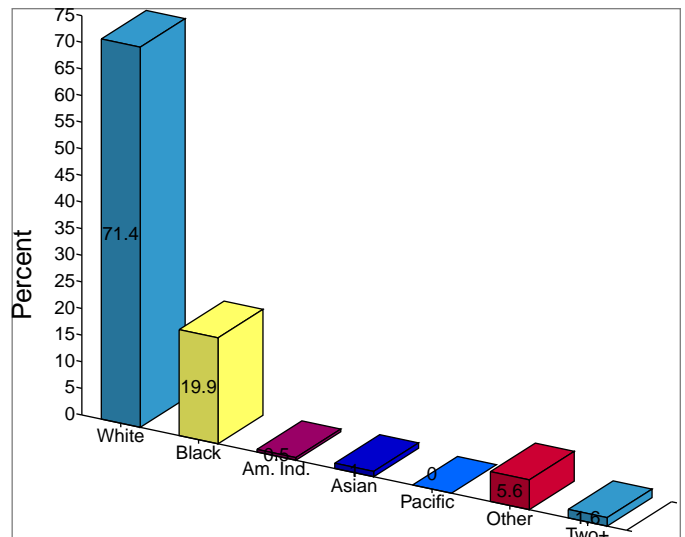
Population by Age



2009 Household Income



2009 Population by Race



2009 Percent Hispanic Origin: 9.1%



Demographic and Income Profile

Salem Street Station
900 W Cooksey Dr
Thomasville, NC 27360-3374

Site Type: Rings

Latitude: 35.89915
Longitude: -80.09257
Radius: 5 Miles

Summary	2000	2009	2014
Population	44,282	47,139	48,550
Households	17,816	19,029	19,625
Families	12,642	13,075	13,341
Average Household Size	2.46	2.45	2.45
Owner Occupied HUs	11,593	12,308	12,706
Renter Occupied HUs	6,223	6,721	6,919
Median Age	36.5	38.9	40.1

Trends: 2009-2014 Annual Rate	Area	State	National
Population	0.59%	1.58%	0.91%
Households	0.62%	1.68%	0.94%
Families	0.4%	1.45%	0.74%
Owner HHs	0.64%	1.70%	1.19%
Median Household Income	1.33%	0.85%	0.80%

Households by Income	2000		2009		2014	
	Number	Percent	Number	Percent	Number	Percent
< \$15,000	3,168	17.9%	2,697	14.2%	2,635	13.4%
\$15,000 - \$24,999	2,915	16.4%	2,352	12.4%	2,325	11.8%
\$25,000 - \$34,999	2,798	15.8%	2,227	11.7%	2,066	10.5%
\$35,000 - \$49,999	3,125	17.6%	3,401	17.9%	3,670	18.7%
\$50,000 - \$74,999	3,336	18.8%	4,695	24.7%	5,358	27.3%
\$75,000 - \$99,999	1,394	7.9%	1,984	10.4%	1,812	9.2%
\$100,000 - \$149,999	646	3.6%	1,152	6.1%	1,196	6.1%
\$150,000 - \$199,000	144	0.8%	256	1.3%	273	1.4%
\$200,000+	208	1.2%	265	1.4%	290	1.5%
Median Household Income	\$34,943		\$43,598		\$46,585	
Average Household Income	\$45,528		\$53,515		\$54,679	
Per Capita Income	\$18,319		\$21,608		\$22,115	

Population by Age	2000		2009		2014	
	Number	Percent	Number	Percent	Number	Percent
0 - 4	3,172	7.2%	3,303	7.0%	3,280	6.8%
5 - 9	3,066	6.9%	3,182	6.8%	3,241	6.7%
10 - 14	2,920	6.6%	3,162	6.7%	3,286	6.8%
15 - 19	2,586	5.8%	2,966	6.3%	3,048	6.3%
20 - 24	2,558	5.8%	2,541	5.4%	2,801	5.8%
25 - 34	6,745	15.2%	5,701	12.1%	5,540	11.4%
35 - 44	6,773	15.3%	6,968	14.8%	6,510	13.4%
45 - 54	5,758	13.0%	6,804	14.4%	6,881	14.2%
55 - 64	4,369	9.9%	5,637	12.0%	6,187	12.7%
65 - 74	3,344	7.6%	3,544	7.5%	4,329	8.9%
75 - 84	2,252	5.1%	2,337	5.0%	2,376	4.9%
85+	739	1.7%	994	2.1%	1,068	2.2%

Race and Ethnicity	2000		2009		2014	
	Number	Percent	Number	Percent	Number	Percent
White Alone	35,751	80.7%	36,542	77.5%	36,679	75.6%
Black Alone	6,190	14.0%	6,852	14.5%	7,104	14.6%
American Indian Alone	218	0.5%	249	0.5%	266	0.5%
Asian Alone	406	0.9%	611	1.3%	750	1.5%
Pacific Islander Alone	5	0.0%	6	0.0%	6	0.0%
Some Other Race Alone	1,216	2.7%	2,180	4.6%	2,913	6.0%
Two or More Races	497	1.1%	698	1.5%	831	1.7%
Hispanic Origin (Any Race)	2,269	5.1%	3,680	7.8%	4,694	9.7%

Data Note: Income is expressed in current dollars.

Source: U.S. Bureau of the Census, 2000 Census of Population and Housing. ESRI forecasts for 2009 and 2014.



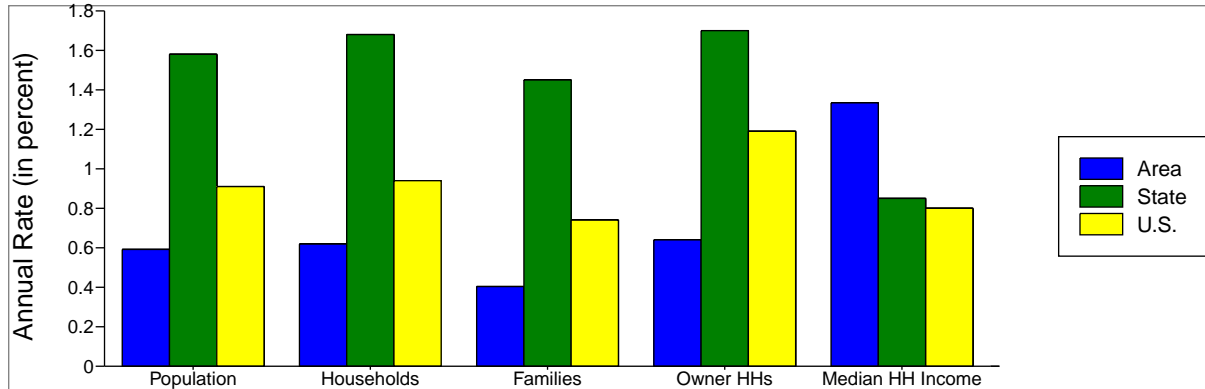
Demographic and Income Profile

Salem Street Station
 900 W Cooksey Dr
 Thomasville, NC 27360-3374

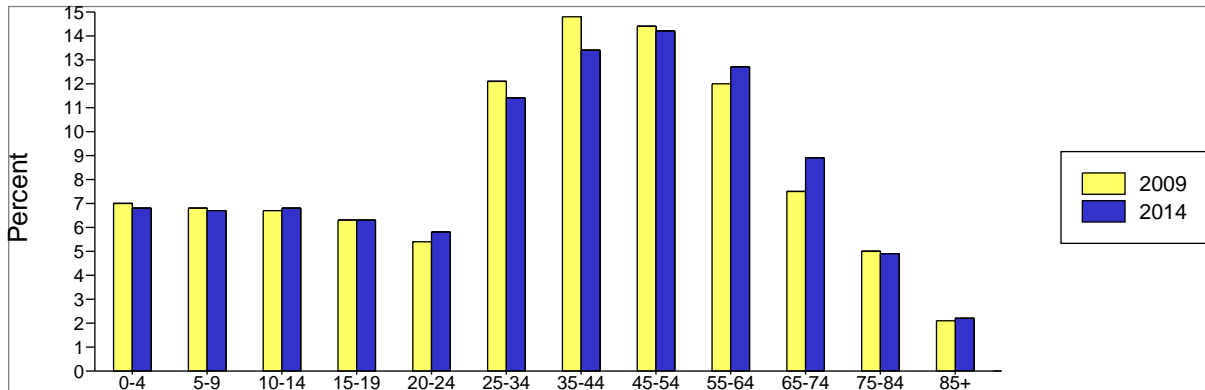
Latitude: 35.89915
 Longitude: -80.09257
 Radius: 5 Miles

Site Type: Rings

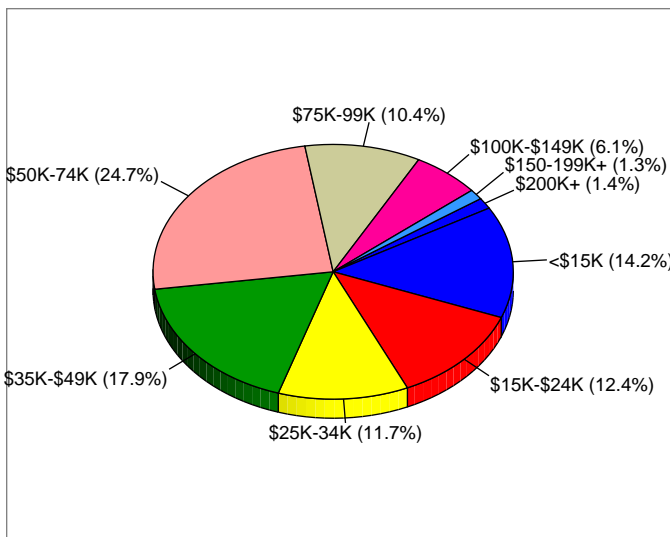
Trends 2009-2014



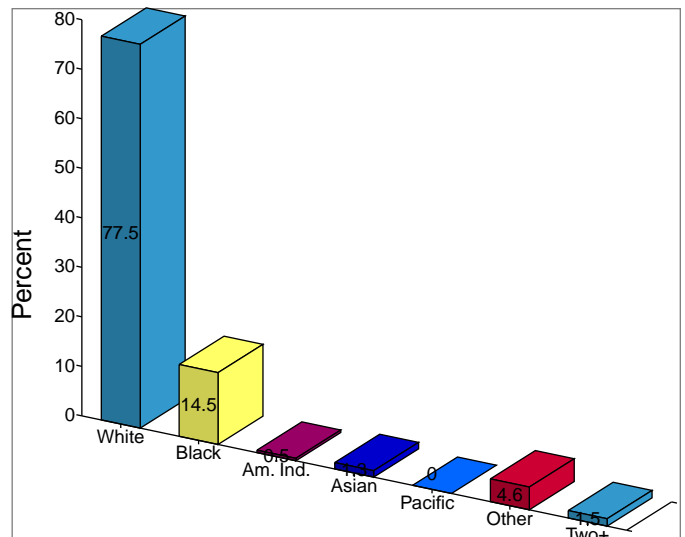
Population by Age



2009 Household Income



2009 Population by Race



2009 Percent Hispanic Origin: 7.8%



Salem Street Station
900 W Cooksey Dr
Thomasville, NC 27360-3374

Site Type: Rings

Latitude: 35.89915
Longitude: -80.09257
Rings 1, 3, 5 Miles

