



Demographic and Income Profile

Henderson Mall
Dabney Dr
Henderson, NC 27536

Latitude: 36.3308
Longitude: -78.43165
Radius: 1 Miles

Site Type: Rings

Summary	2000	2009	2014
Population	3,459	3,537	3,533
Households	1,620	1,705	1,714
Families	974	977	967
Average Household Size	2.08	2.02	2.01
Owner Occupied HUs	847	874	879
Renter Occupied HUs	773	831	835
Median Age	40.4	42.4	42.6

Trends: 2009-2014 Annual Rate	Area	State	National
Population	-0.02%	1.58%	0.91%
Households	0.11%	1.68%	0.94%
Families	-0.21%	1.45%	0.74%
Owner HHs	0.11%	1.70%	1.19%
Median Household Income	2.19%	0.85%	0.80%

Households by Income	2000		2009		2014	
	Number	Percent	Number	Percent	Number	Percent
< \$15,000	491	30.3%	374	21.9%	361	21.0%
\$15,000 - \$24,999	300	18.5%	283	16.6%	263	15.3%
\$25,000 - \$34,999	147	9.1%	202	11.8%	191	11.1%
\$35,000 - \$49,999	231	14.3%	201	11.8%	230	13.4%
\$50,000 - \$74,999	235	14.5%	257	15.1%	275	16.0%
\$75,000 - \$99,999	95	5.9%	198	11.6%	194	11.3%
\$100,000 - \$149,999	63	3.9%	112	6.6%	117	6.8%
\$150,000 - \$199,000	38	2.3%	34	2.0%	36	2.1%
\$200,000+	18	1.1%	44	2.6%	48	2.8%
Median Household Income	\$26,178		\$34,484		\$38,435	
Average Household Income	\$39,977		\$51,844		\$53,611	
Per Capita Income	\$18,506		\$24,366		\$25,409	

Population by Age	2000		2009		2014	
	Number	Percent	Number	Percent	Number	Percent
0 - 4	244	7.1%	236	6.7%	228	6.4%
5 - 9	243	7.0%	221	6.2%	217	6.1%
10 - 14	219	6.3%	220	6.2%	212	6.0%
15 - 19	193	5.6%	220	6.2%	204	5.8%
20 - 24	178	5.1%	207	5.8%	226	6.4%
25 - 34	405	11.7%	386	10.9%	417	11.8%
35 - 44	452	13.1%	377	10.7%	353	10.0%
45 - 54	439	12.7%	441	12.5%	394	11.1%
55 - 64	340	9.8%	425	12.0%	425	12.0%
65 - 74	384	11.1%	325	9.2%	380	10.7%
75 - 84	274	7.9%	334	9.4%	301	8.5%
85+	87	2.5%	147	4.2%	179	5.1%

Race and Ethnicity	2000		2009		2014	
	Number	Percent	Number	Percent	Number	Percent
White Alone	2,119	61.3%	2,110	59.7%	2,072	58.6%
Black Alone	1,250	36.1%	1,296	36.7%	1,303	36.9%
American Indian Alone	4	0.1%	4	0.1%	4	0.1%
Asian Alone	42	1.2%	61	1.7%	73	2.1%
Pacific Islander Alone	0	0.0%	0	0.0%	1	0.0%
Some Other Race Alone	21	0.6%	35	1.0%	46	1.3%
Two or More Races	23	0.7%	30	0.8%	34	1.0%
Hispanic Origin (Any Race)	35	1.0%	56	1.6%	71	2.0%

Data Note: Income is expressed in current dollars.

Source: U.S. Bureau of the Census, 2000 Census of Population and Housing. ESRI forecasts for 2009 and 2014.



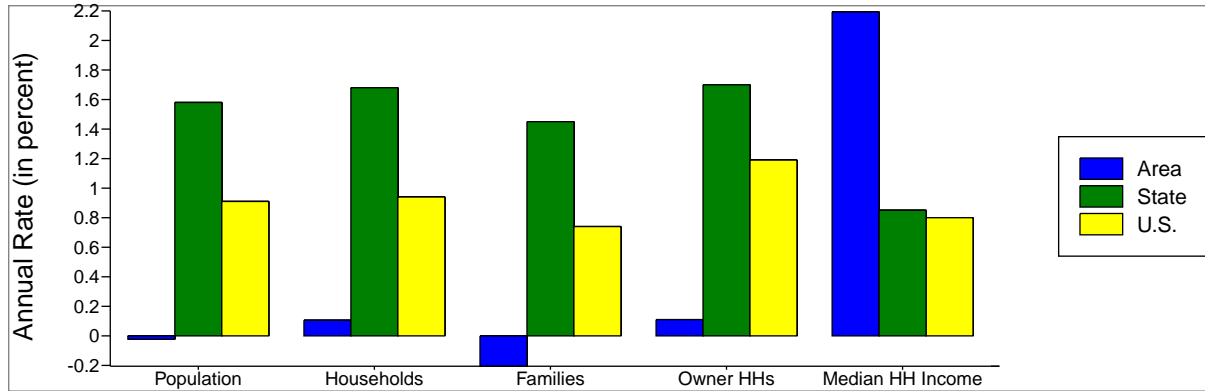
Demographic and Income Profile

Henderson Mall
Dabney Dr
Henderson, NC 27536

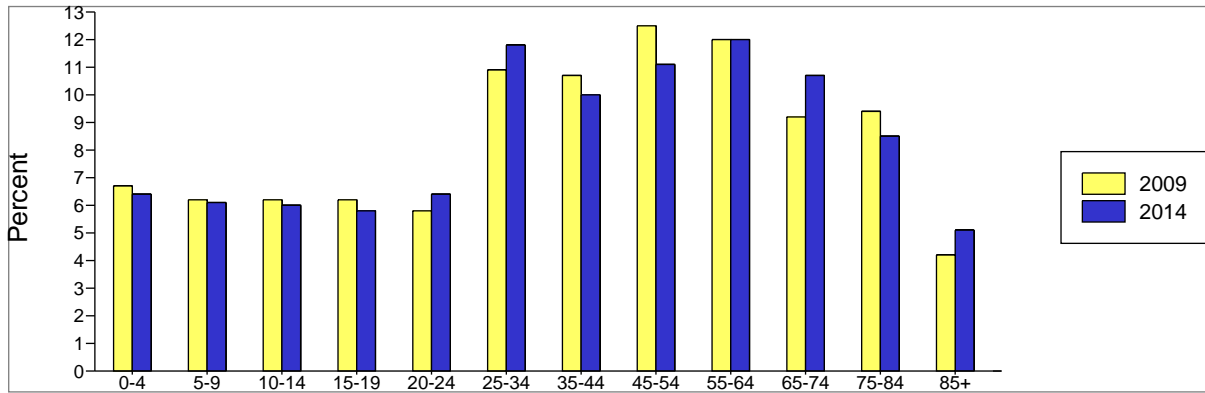
Latitude: 36.3308
Longitude: -78.43165
Radius: 1 Miles

Site Type: Rings

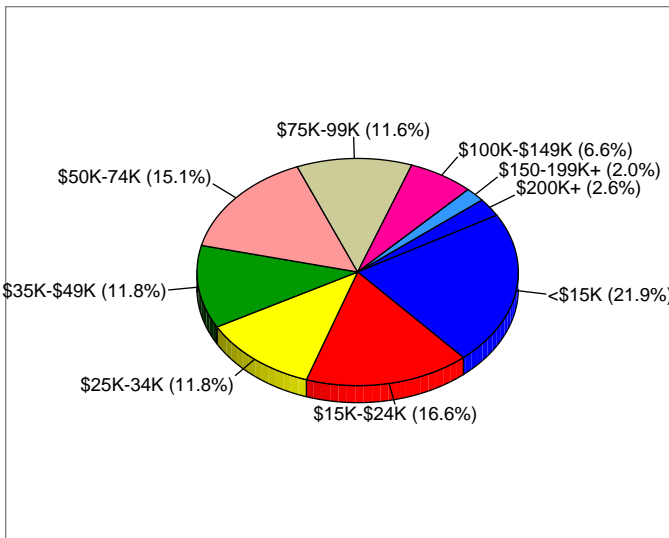
Trends 2009-2014



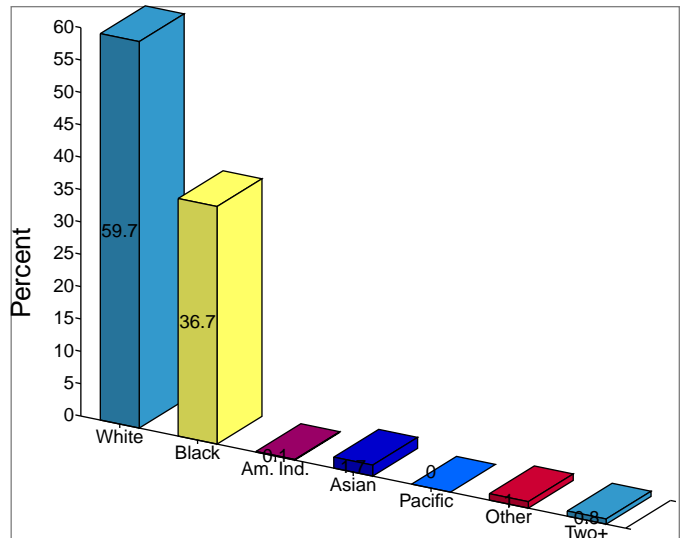
Population by Age



2009 Household Income



2009 Population by Race



2009 Percent Hispanic Origin: 1.6%



Demographic and Income Profile

Henderson Mall
Dabney Dr
Henderson, NC 27536

Site Type: Rings

Latitude: 36.3308
Longitude: -78.43165
Radius: 3 Miles

Summary	2000	2009	2014
Population	20,492	19,844	19,450
Households	8,036	7,961	7,851
Families	5,373	5,128	4,998
Average Household Size	2.48	2.42	2.40
Owner Occupied HUs	4,224	4,172	4,088
Renter Occupied HUs	3,812	3,789	3,763
Median Age	36.4	38.2	38.9

Trends: 2009-2014 Annual Rate	Area	State	National
Population	-0.4%	1.58%	0.91%
Households	-0.28%	1.68%	0.94%
Families	-0.51%	1.45%	0.74%
Owner HHs	-0.41%	1.70%	1.19%
Median Household Income	1.82%	0.85%	0.80%

Households by Income	2000		2009		2014	
	Number	Percent	Number	Percent	Number	Percent
< \$15,000	2,473	30.9%	1,958	24.6%	1,835	23.4%
\$15,000 - \$24,999	1,436	18.0%	1,212	15.2%	1,166	14.8%
\$25,000 - \$34,999	995	12.4%	960	12.1%	836	10.6%
\$35,000 - \$49,999	1,176	14.7%	1,150	14.4%	1,271	16.2%
\$50,000 - \$74,999	1,062	13.3%	1,329	16.7%	1,387	17.7%
\$75,000 - \$99,999	395	4.9%	695	8.7%	672	8.6%
\$100,000 - \$149,999	233	2.9%	379	4.8%	387	4.9%
\$150,000 - \$199,000	97	1.2%	101	1.3%	105	1.3%
\$200,000+	133	1.7%	176	2.2%	193	2.5%
Median Household Income	\$25,837		\$32,818		\$35,917	
Average Household Income	\$39,595		\$48,045		\$50,363	
Per Capita Income	\$15,609		\$19,574		\$20,691	

Population by Age	2000		2009		2014	
	Number	Percent	Number	Percent	Number	Percent
0 - 4	1,471	7.2%	1,386	7.0%	1,329	6.8%
5 - 9	1,575	7.7%	1,379	6.9%	1,337	6.9%
10 - 14	1,551	7.6%	1,351	6.8%	1,320	6.8%
15 - 19	1,308	6.4%	1,398	7.0%	1,258	6.5%
20 - 24	1,280	6.2%	1,265	6.4%	1,297	6.7%
25 - 34	2,663	13.0%	2,332	11.8%	2,302	11.8%
35 - 44	2,855	13.9%	2,503	12.6%	2,355	12.1%
45 - 54	2,638	12.9%	2,692	13.6%	2,402	12.4%
55 - 64	1,828	8.9%	2,327	11.7%	2,476	12.7%
65 - 74	1,703	8.3%	1,478	7.4%	1,704	8.8%
75 - 84	1,193	5.8%	1,177	5.9%	1,072	5.5%
85+	428	2.1%	557	2.8%	597	3.1%

Race and Ethnicity	2000		2009		2014	
	Number	Percent	Number	Percent	Number	Percent
White Alone	8,604	42.0%	8,240	41.5%	7,980	41.0%
Black Alone	11,107	54.2%	10,504	52.9%	10,155	52.2%
American Indian Alone	42	0.2%	45	0.2%	46	0.2%
Asian Alone	129	0.6%	179	0.9%	210	1.1%
Pacific Islander Alone	8	0.0%	9	0.0%	10	0.1%
Some Other Race Alone	429	2.1%	648	3.3%	802	4.1%
Two or More Races	172	0.8%	219	1.1%	246	1.3%
Hispanic Origin (Any Race)	994	4.9%	1,342	6.8%	1,572	8.1%

Data Note: Income is expressed in current dollars.

Source: U.S. Bureau of the Census, 2000 Census of Population and Housing. ESRI forecasts for 2009 and 2014.



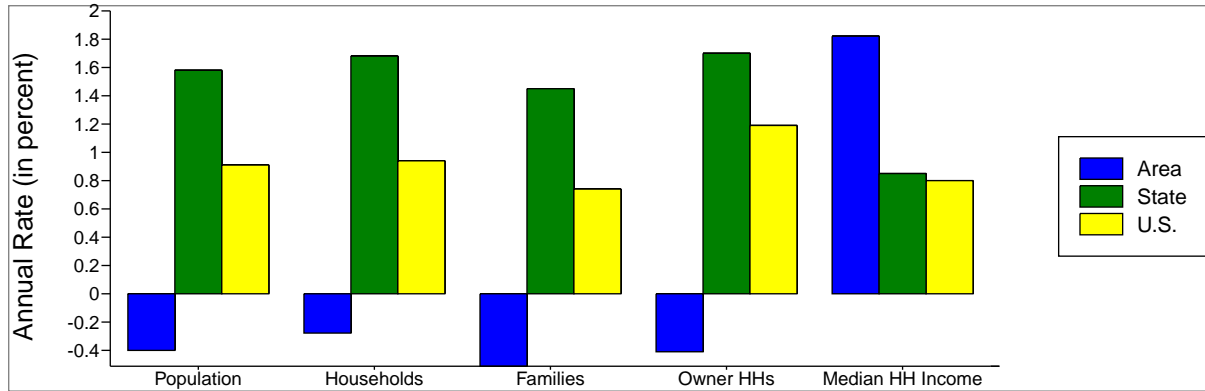
Demographic and Income Profile

Henderson Mall
Dabney Dr
Henderson, NC 27536

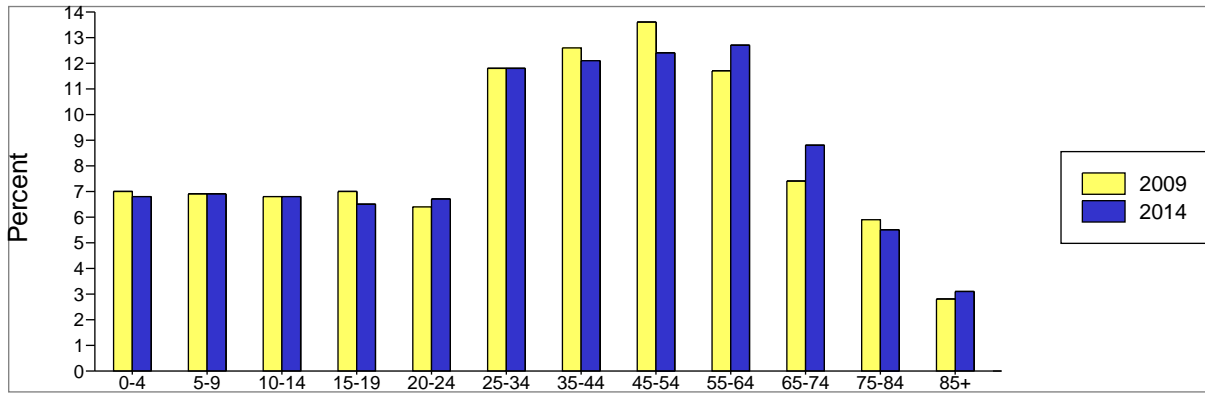
Latitude: 36.3308
Longitude: -78.43165
Radius: 3 Miles

Site Type: Rings

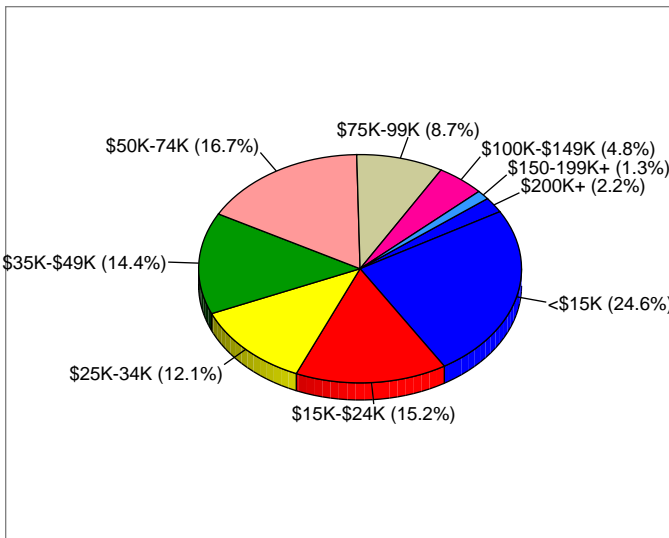
Trends 2009-2014



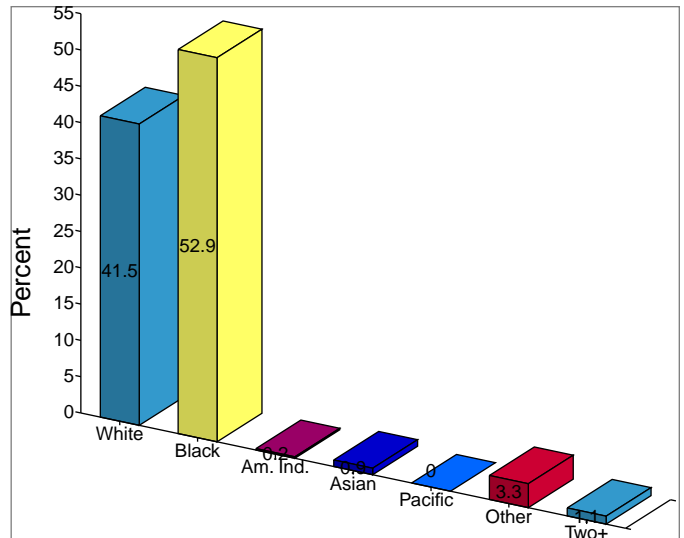
Population by Age



2009 Household Income



2009 Population by Race



2009 Percent Hispanic Origin: 6.8%



Demographic and Income Profile

Henderson Mall
Dabney Dr
Henderson, NC 27536

Latitude: 36.3308
Longitude: -78.43165
Radius: 5 Miles

Site Type: Rings

Summary	2000	2009	2014
Population	28,491	28,202	27,796
Households	10,930	11,033	10,936
Families	7,575	7,405	7,264
Average Household Size	2.54	2.49	2.48
Owner Occupied HUs	6,436	6,502	6,434
Renter Occupied HUs	4,494	4,532	4,502
Median Age	35.2	37.0	37.7

Trends: 2009-2014 Annual Rate	Area	State	National
Population	-0.29%	1.58%	0.91%
Households	-0.18%	1.68%	0.94%
Families	-0.38%	1.45%	0.74%
Owner HHs	-0.21%	1.70%	1.19%
Median Household Income	1.31%	0.85%	0.80%

Households by Income	2000		2009		2014	
	Number	Percent	Number	Percent	Number	Percent
< \$15,000	3,054	28.0%	2,397	21.7%	2,250	20.6%
\$15,000 - \$24,999	1,907	17.5%	1,618	14.7%	1,544	14.1%
\$25,000 - \$34,999	1,463	13.4%	1,324	12.0%	1,177	10.8%
\$35,000 - \$49,999	1,770	16.2%	1,726	15.6%	1,906	17.4%
\$50,000 - \$74,999	1,511	13.9%	2,102	19.1%	2,191	20.0%
\$75,000 - \$99,999	573	5.3%	970	8.8%	938	8.6%
\$100,000 - \$149,999	353	3.2%	547	5.0%	557	5.1%
\$150,000 - \$199,000	110	1.0%	138	1.3%	142	1.3%
\$200,000+	168	1.5%	209	1.9%	229	2.1%
Median Household Income	\$28,302		\$36,289		\$38,731	
Average Household Income	\$40,930		\$49,324		\$51,568	
Per Capita Income	\$15,791		\$19,550		\$20,595	

Population by Age	2000		2009		2014	
	Number	Percent	Number	Percent	Number	Percent
0 - 4	2,064	7.2%	1,993	7.1%	1,935	7.0%
5 - 9	2,295	8.1%	1,972	7.0%	1,922	6.9%
10 - 14	2,180	7.7%	1,946	6.9%	1,893	6.8%
15 - 19	1,906	6.7%	2,109	7.5%	1,875	6.7%
20 - 24	1,822	6.4%	1,845	6.5%	1,936	7.0%
25 - 34	3,906	13.7%	3,480	12.3%	3,453	12.4%
35 - 44	4,041	14.2%	3,688	13.1%	3,468	12.5%
45 - 54	3,737	13.1%	3,875	13.7%	3,509	12.6%
55 - 64	2,524	8.9%	3,290	11.7%	3,515	12.6%
65 - 74	2,142	7.5%	1,971	7.0%	2,307	8.3%
75 - 84	1,392	4.9%	1,407	5.0%	1,314	4.7%
85+	479	1.7%	625	2.2%	671	2.4%

Race and Ethnicity	2000		2009		2014	
	Number	Percent	Number	Percent	Number	Percent
White Alone	13,022	45.7%	12,618	44.7%	12,234	44.0%
Black Alone	14,307	50.2%	13,892	49.3%	13,522	48.6%
American Indian Alone	65	0.2%	72	0.3%	74	0.3%
Asian Alone	146	0.5%	203	0.7%	238	0.9%
Pacific Islander Alone	9	0.0%	10	0.0%	11	0.0%
Some Other Race Alone	686	2.4%	1,072	3.8%	1,336	4.8%
Two or More Races	256	0.9%	335	1.2%	382	1.4%
Hispanic Origin (Any Race)	1,573	5.5%	2,200	7.8%	2,601	9.4%

Data Note: Income is expressed in current dollars.

Source: U.S. Bureau of the Census, 2000 Census of Population and Housing. ESRI forecasts for 2009 and 2014.



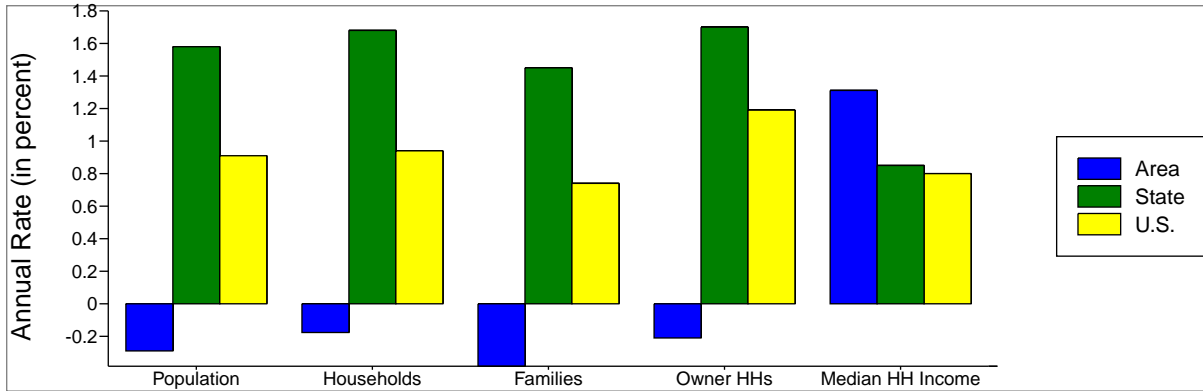
Demographic and Income Profile

Henderson Mall
Dabney Dr
Henderson, NC 27536

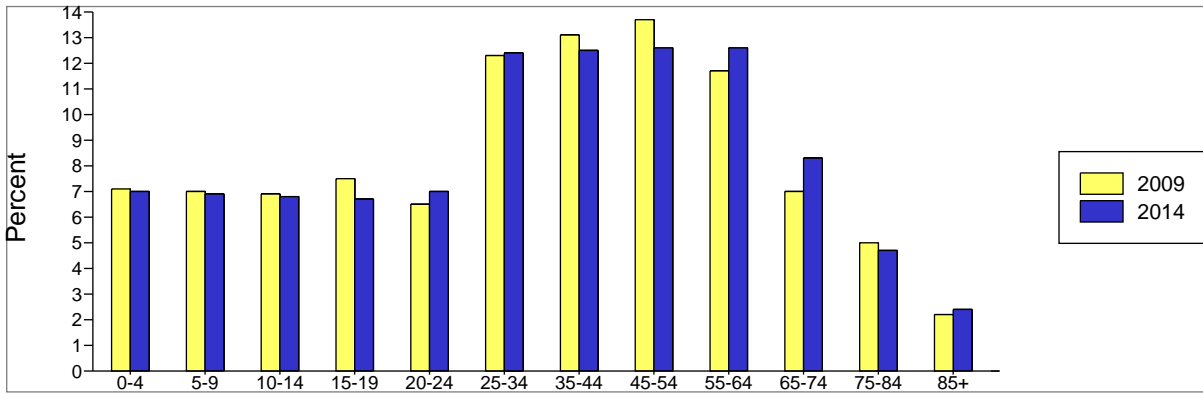
Latitude: 36.3308
Longitude: -78.43165
Radius: 5 Miles

Site Type: Rings

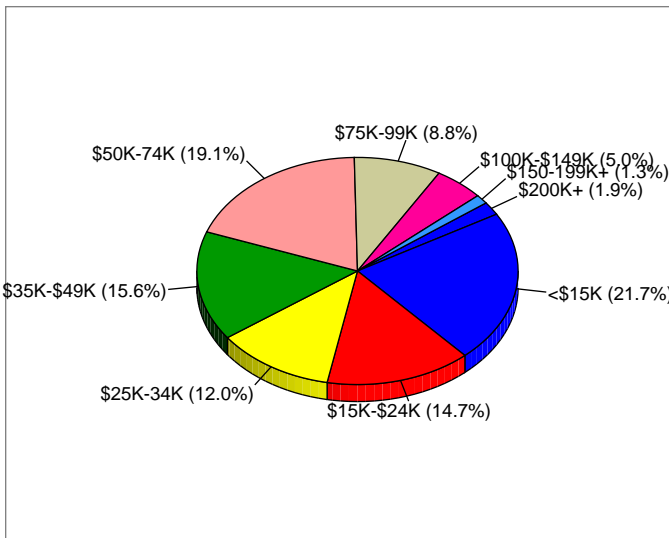
Trends 2009-2014



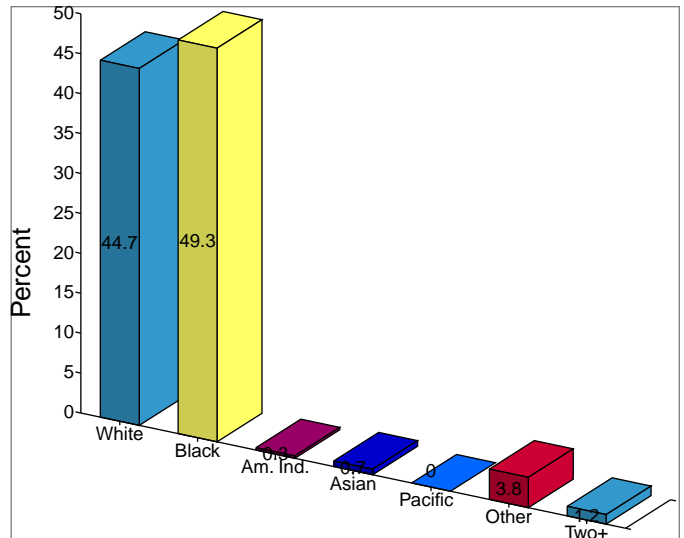
Population by Age



2009 Household Income



2009 Population by Race



2009 Percent Hispanic Origin: 7.8%



Henderson Mall
Dabney Dr
Henderson, NC 27536

Latitude: 36.3308
Longitude: -78.43165
Rings 1, 3, 5 Miles

Site Type: Rings

